



The Sizewell C Project

2.10 Sizewell Link Road Plans Part 1 of 3 Plans For Approval

January 2021

Planning Act 2008
Infrastructure Planning (Applications: Prescribed Forms and Procedure) Regulations 2009

Revision: 2.0
Applicable Regulation: Regulation 5(2)(o)
PINS Reference Number: EN010012



Sizewell Link Road Plans - For Approval

Drawing Number	Revision	Drawing Title	Scale	Sheet Size
Sizewell Link Road Plans For Approval – Part 1				
SZC-SZ0204-XX-000-DRW-100055	02	Sizewell Link Road - Key Plan	1:10000	A1
SZC-SZ0204-XX-000-DRW-100056	02	Sizewell Link Road Proposed General Arrangement And Profiles - Sheet 1 of 5	1:2500	A1
SZC-SZ0204-XX-000-DRW-100057	02	Sizewell Link Road Proposed General Arrangement And Profiles - Sheet 2 of 5	1:2500	A1
SZC-SZ0204-XX-000-DRW-100058	02	Sizewell Link Road Proposed General Arrangement And Profiles - Sheet 3 of 5	1:2500	A1
SZC-SZ0204-XX-000-DRW-100059	02	Sizewell Link Road Proposed General Arrangement And Profiles - Sheet 4 of 5	1:2500	A1
SZC-SZ0204-XX-000-DRW-100060	02	Sizewell Link Road Proposed General Arrangement And Profiles - Sheet 5 of 5	1:2500	A1
Sizewell Link Road Plans For Approval – Part 2				
SZC-SZ0204-XX-000-DRW-100064	02	Sizewell Link Road A12 Junction Proposed General Arrangement	1:1000	A1
SZC-SZ0204-XX-000-DRW-100066	02	Sizewell Link Road B1122 / B1125 Junction Proposed General Arrangement	1:1000	A1
SZC-SZ0204-XX-000-DRW-100067	02	Sizewell Link Road B1122 / Theberton Junction Proposed General Arrangement	1:1000	A1
SZC-SZ0204-XX-000-DRW-100141	02	Sizewell Link Road Moat Road Junction Proposed General Arrangement	1:1000	A1
SZC-SZ0204-XX-000-DRW-100140	02	Sizewell Link Road Hawthorn Road Junction Proposed General Arrangement	1:1000	A1
SZC-SZ0204-XX-000-DRW-100137	02	Sizewell Link Road Fordley Road Junction Proposed General Arrangement	1:1000	A1
SZC-SZ0204-XX-000-DRW-100138	02	Sizewell Link Road Trust Farm Staggered Junction Proposed General Arrangement	1:1000	A1
SZC-SZ0204-XX-000-DRW-100065	02	Sizewell Link Road Middleton Moor Junction Proposed General Arrangement	1:2000	A1
SZC-SZ0204-XX-000-DRW-100139	02	Sizewell Link Road Pretty Road Junction Proposed General Arrangement	1:1000	A1
SZC-SZ0204-XX-000-DRW-100296	02	East Suffolk Line Bridge Proposed General Arrangement And Elevation	1:150 1:2000	A1
SZC-SZ0204-XX-000-DRW-100299	01	Pretty Road Footbridge Proposed General Arrangement And Elevation	1:125 1:2000	A1

Sizewell Link Road Plans – For Approval

Drawing Number	Revision	Drawing Title	Scale	Sheet Size
Sizewell Link Road Plans For Approval – Part 3				
SZC-SZ0701-XX-000-DRW-100147	02	Sizewell Link Road Proposed Landscape Masterplan And Finished Levels - Key Plan	1:10000	A1
SZC-SZ0701-XX-000-DRW-100170	02	Sizewell Link Road Proposed Landscape Masterplan And Finished Levels - Sheet 1 of 4	1:2500	A1
SZC-SZ0701-XX-000-DRW-100171	02	Sizewell Link Road Proposed Landscape Masterplan And Finished Levels - Sheet 2 of 4	1:2500	A1
SZC-SZ0701-XX-000-DRW-100172	02	Sizewell Link Road Proposed Landscape Masterplan And Finished Levels - Sheet 3 of 4	1:2500	A1
SZC-SZ0701-XX-000-DRW-100173	02	Sizewell Link Road Proposed Landscape Masterplan And Finished Levels - Sheet 4 of 4	1:2500	A1
SZC-SZ0701-XX-000-DRW-100146	02	Sizewell Link Road Site Clearance Plan - Key Plan	1:10000	A1
SZC-SZ0701-XX-000-DRW-100174	02	Sizewell Link Road Site Clearance Plan Sheet 1 of 4	1:2500	A1
SZC-SZ0701-XX-000-DRW-100175	02	Sizewell Link Road Site Clearance Plan Sheet 2 of 4	1:2500	A1
SZC-SZ0701-XX-000-DRW-100176	02	Sizewell Link Road Site Clearance Plan Sheet 3 of 4	1:2500	A1
SZC-SZ0701-XX-000-DRW-100177	02	Sizewell Link Road Site Clearance Plan Sheet 4 of 4	1:2500	A1

Sizewell Link Road Plans For Approval – Revision Schedule

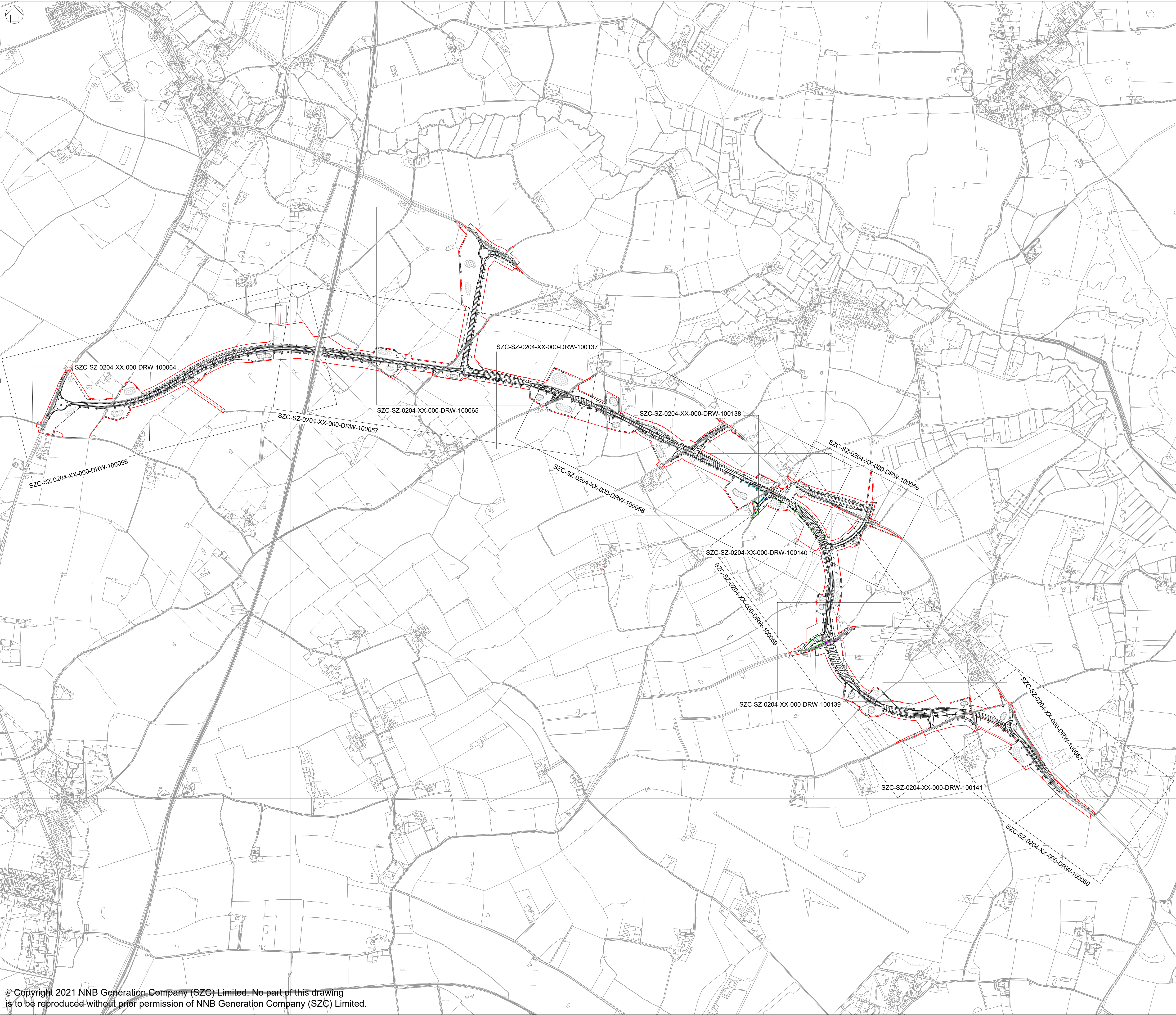
Drawing Number	Revision	Drawing Title	Amendments
Sizewell Link Road Plans For Approval – Part 1			
SZC-SZ0204-XX-000-DRW-100055	02	Sizewell Link Road - Key Plan	Changes to the Order Limits to accommodate updates to drainage design assumptions, highway design development and in response to topographic survey information.
SZC-SZ0204-XX-000-DRW-100056	02	Sizewell Link Road Proposed General Arrangement And Profiles - Sheet 1 of 5	Changes to the Order Limits to accommodate updates to drainage design assumptions, highway design development and in response to topographic survey information.
SZC-SZ0204-XX-000-DRW-100057	02	Sizewell Link Road Proposed General Arrangement And Profiles - Sheet 2 of 5	Changes to the Order Limits to accommodate updates to drainage design assumptions, highway design development and in response to topographic survey information.
SZC-SZ0204-XX-000-DRW-100058	02	Sizewell Link Road Proposed General Arrangement And Profiles - Sheet 3 of 5	Changes to the Order Limits to accommodate updates to drainage design assumptions, highway design development and in response to topographic survey information.
SZC-SZ0204-XX-000-DRW-100059	02	Sizewell Link Road Proposed General Arrangement And Profiles - Sheet 4 of 5	Changes to the Order Limits to accommodate updates to drainage design assumptions, highway design development and in response to topographic survey information.
SZC-SZ0204-XX-000-DRW-100060	02	Sizewell Link Road Proposed General Arrangement And Profiles - Sheet 5 of 5	Changes to the Order Limits to accommodate updates to drainage design assumptions, highway design development and in response to topographic survey information.
Sizewell Link Road Plans For Approval – Part 2			
SZC-SZ0204-XX-000-DRW-100064	02	Sizewell Link Road A12 Junction Proposed General Arrangement	Changes to the Order Limits to accommodate updates to drainage design assumptions, highway design development and in response to topographic survey information.
SZC-SZ0204-XX-000-DRW-100066	02	Sizewell Link Road B1122 / B1125 Junction Proposed General Arrangement	Changes to the Order Limits to accommodate updates to drainage design assumptions, highway design development and in response to topographic survey information.
SZC-SZ0204-XX-000-DRW-100067	02	Sizewell Link Road B1122 / Theberton Junction Proposed General Arrangement	Changes to the Order Limits to accommodate updates to drainage design assumptions, highway design development and in response to topographic survey information.
SZC-SZ0204-XX-000-DRW-100141	02	Sizewell Link Road Moat Road Junction Proposed General Arrangement	Changes to the Order Limits to accommodate updates to drainage design assumptions, highway design development and in response to topographic survey information.

Sizewell Link Road Plans For Approval – Revision Schedule

Drawing Number	Revision	Drawing Title	Amendments
Sizewell Link Road Plans For Approval – Part 2 (continued)			
SZC-SZ0204-XX-000-DRW-100140	02	Sizewell Link Road Hawthorn Road Junction Proposed General Arrangement	Changes to the Order Limits to accommodate updates to drainage design assumptions, highway design development and in response to topographic survey information.
SZC-SZ0204-XX-000-DRW-100137	02	Sizewell Link Road Fordley Road Junction Proposed General Arrangement	Changes to the Order Limits to accommodate updates to drainage design assumptions, highway design development and in response to topographic survey information.
SZC-SZ0204-XX-000-DRW-100138	02	Sizewell Link Road Trust Farm Staggered Junction Proposed General Arrangement	Changes to the Order Limits to accommodate updates to drainage design assumptions, highway design development and in response to topographic survey information.
SZC-SZ0204-XX-000-DRW-100065	02	Sizewell Link Road Middleton Moor Junction Proposed General Arrangement	Changes to the Order Limits to accommodate updates to drainage design assumptions, highway design development and in response to topographic survey information.
SZC-SZ0204-XX-000-DRW-100139	02	Sizewell Link Road Pretty Road Junction Proposed General Arrangement	Changes to the Order Limits to accommodate updates to drainage design assumptions, highway design development and in response to topographic survey information.
SZC-SZ0204-XX-000-DRW-100296	02	East Suffolk Line Bridge Proposed General Arrangement And Elevation	Changes to the Order Limits to accommodate updates to drainage design assumptions, highway design development and in response to topographic survey information.
SZC-SZ0204-XX-000-DRW-100299	01	Pretty Road Footbridge Proposed General Arrangement And Elevation	No updates made.
Sizewell Link Road Plans For Approval – Part 3			
SZC-SZ0701-XX-000-DRW-100147	02	Sizewell Link Road Proposed Landscape Masterplan And Finished Levels - Key Plan	Changes to the Order Limits to accommodate updates to drainage design assumptions, highway design development and in response to topographic survey information.
SZC-SZ0701-XX-000-DRW-100170	02	Sizewell Link Road Proposed Landscape Masterplan And Finished Levels - Sheet 1 of 4	Changes to the Order Limits to accommodate updates to drainage design assumptions, highway design development and in response to topographic survey information.
SZC-SZ0701-XX-000-DRW-100171	02	Sizewell Link Road Proposed Landscape Masterplan And Finished Levels - Sheet 2 of 4	Changes to the Order Limits to accommodate updates to drainage design assumptions, highway design development and in response to topographic survey information.

Sizewell Link Road Plans For Approval – Revision Schedule

Drawing Number	Revision	Drawing Title	Amendments
Sizewell Link Road Plans For Approval – Part 3 (continued)			
SZC-SZ0701-XX-000-DRW-100176	02	Sizewell Link Road Site Clearance Plan Sheet 3 of 4	Changes to the Order Limits to accommodate updates to drainage design assumptions, highway design development and in response to topographic survey information.
SZC-SZ0701-XX-000-DRW-100177	02	Sizewell Link Road Site Clearance Plan Sheet 4 of 4	Changes to the Order Limits to accommodate updates to drainage design assumptions, highway design development and in response to topographic survey information.



© Copyright 2021 NNB Generation Company (SZC) Limited. No part of this drawing is to be reproduced without prior permission of NNB Generation Company (SZC) Limited.

- NOTES:
1. THIS DRAWING IS FOR PLANNING PURPOSES ONLY AND SHALL NOT BE USED FOR CONSTRUCTION OR ANY OTHER PURPOSE.
 2. ALL DIMENSIONS ARE IN METRES UNLESS STATED OTHERWISE.
 3. ALL LEVELS ARE IN METRES UNLESS STATED OTHERWISE.
 4. THE SCHEME DESIGN IS BASED ON ORDNANCE SURVEY MAPPING DATA. THE EXISTING GROUND TERRAIN AND PROPOSED SURFACES ARE BASED ON THE UK GOVERNMENT'S OPEN SOURCE LIDAR DIGITAL TERRAIN MAPPING DATA. ALL POSITIONS AND LEVELS ARE TO BE REVIEWED FOLLOWING COMPLETION OF A DETAILED SITE TOPOGRAPHICAL SURVEY.
 5. ALL PROPOSED ROADWORK ARE TO BE IN ACCORDANCE WITH THE DESIGN MANUAL FOR ROADS AND BRIDGES (DMRB) OR AS AGREED WITH THE LOCAL HIGHWAY AUTHORITY.
 6. NEW SIGNS AND ROAD MARKINGS WILL BE BASED ON TSRGD 2016 OR AS AGREED WITH THE LOCAL HIGHWAY AUTHORITY.
 7. ALL EARTHWORKS BATTER SLOPES ARE SHOWN AT A GRADIENT OF 1 IN 3.
 8. THE PROPOSED CARRIAGEWAY WIDTH 7.3m WITH 1.0m HARDSTRIPS ON BOTH SIDES OF THE CARRIAGEWAY PROVIDING 9.3m TOTAL PAVED WIDTH.
 9. ROAD ALIGNMENT GEOMETRY HAS BEEN DESIGNED IN ACCORDANCE WITH DMRB td 9/93.
 10. ROUNDABOUT GEOMETRY DESIGNED IN ACCORDANCE WITH DMRB CD 116.
 11. FOR DETAILS OF PROPOSED DRAINAGE REFER TO DRAINAGE DRAWINGS.
 12. FOR DETAILS OF STREET LIGHTING REFER TO LIGHTING DRAWING.
 13. FOR DETAILS OF LANDSCAPING AND PLANTING REFER TO THE LANDSCAPE AND ARCHITECTS PLANS.
 14. ALL PROPOSED ROADWORK ARE TO BE IN ACCORDANCE WITH DESIGN MANUAL OF ROADS AND BRIDGES (DMRB) OR HAS AGREED WITH LOCAL AUTHORITY.
 15. WHERE THE PROPOSED ROAD MARKINGS ARE SHOWN THE EXISTING ROAD MARKING ARE TO BE REMOVED AS APPROPRIATE.

PLAN KEY:

— DEVELOPMENT SITE BOUNDARY

02	JAN 2021	EBA	MPB	PROPOSED CHANGES TO THE DCO APPLICATION - JANUARY 2021	SZC CO
01	FEB 2020	LMM	HP	DCO SUBMISSION	SZC CO
REVISION	DATE	DRAWN/CHECKED	REASONS FOR REVISION / COMMENTS		APPROVED

NOT PROTECTIVELY MARKED

COPYRIGHT:

Reproduced from Ordnance Survey map with the permission of Ordnance Survey on behalf of the controller of Her Majesty's Stationary Office © Crown copyright (2021). All Rights reserved. NNB GenCo Licence: 0100060408



PROJECT:
SIZEWELL C

DOCUMENT:
APPLICATION DRAWING-
FOR APPROVAL
REGULATION 5(2)(o)

DRAWING TITLE:
SIZEWELL LINK ROAD
KEY PLAN

DRAWING NO:
SZC-SZ0204-XX-000-DRW-100055

REVISION:
02

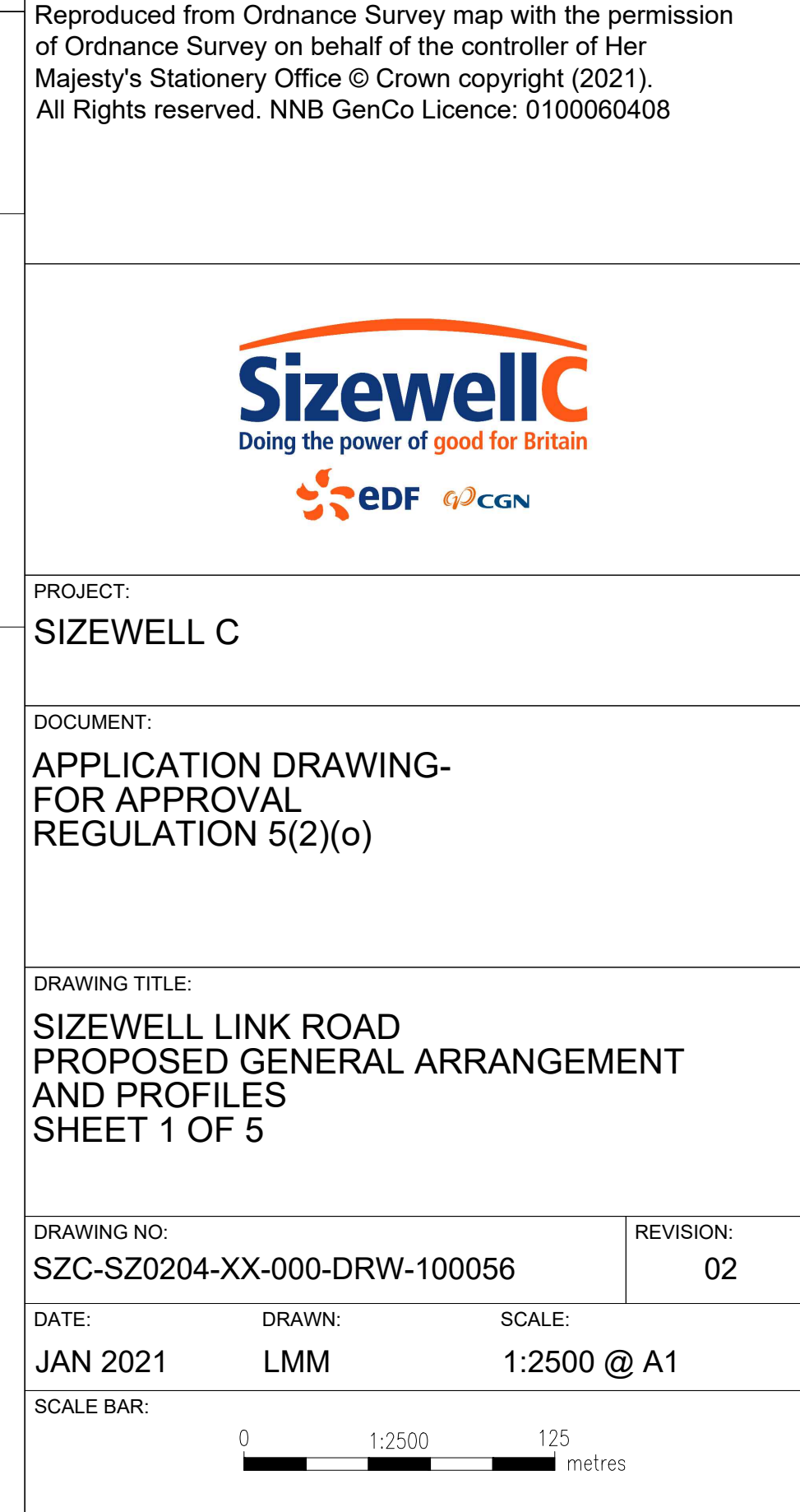
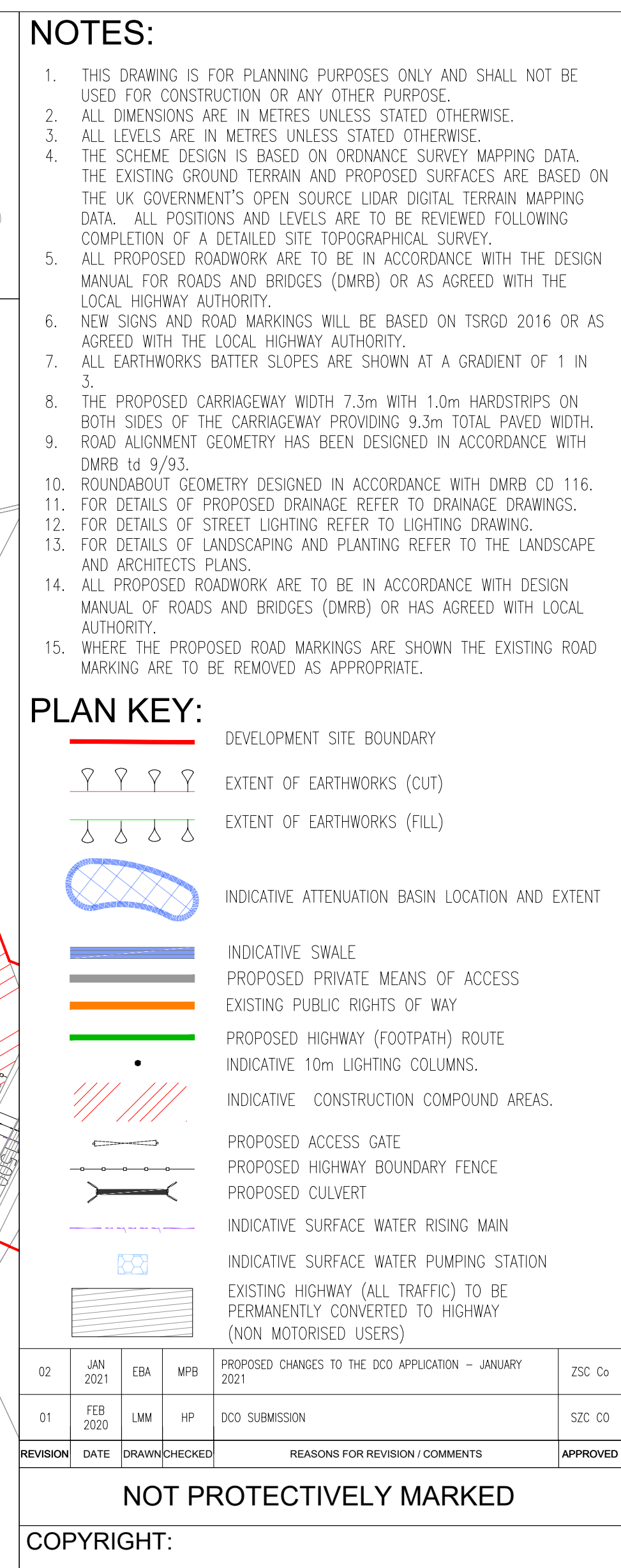
DATE: JAN 2021

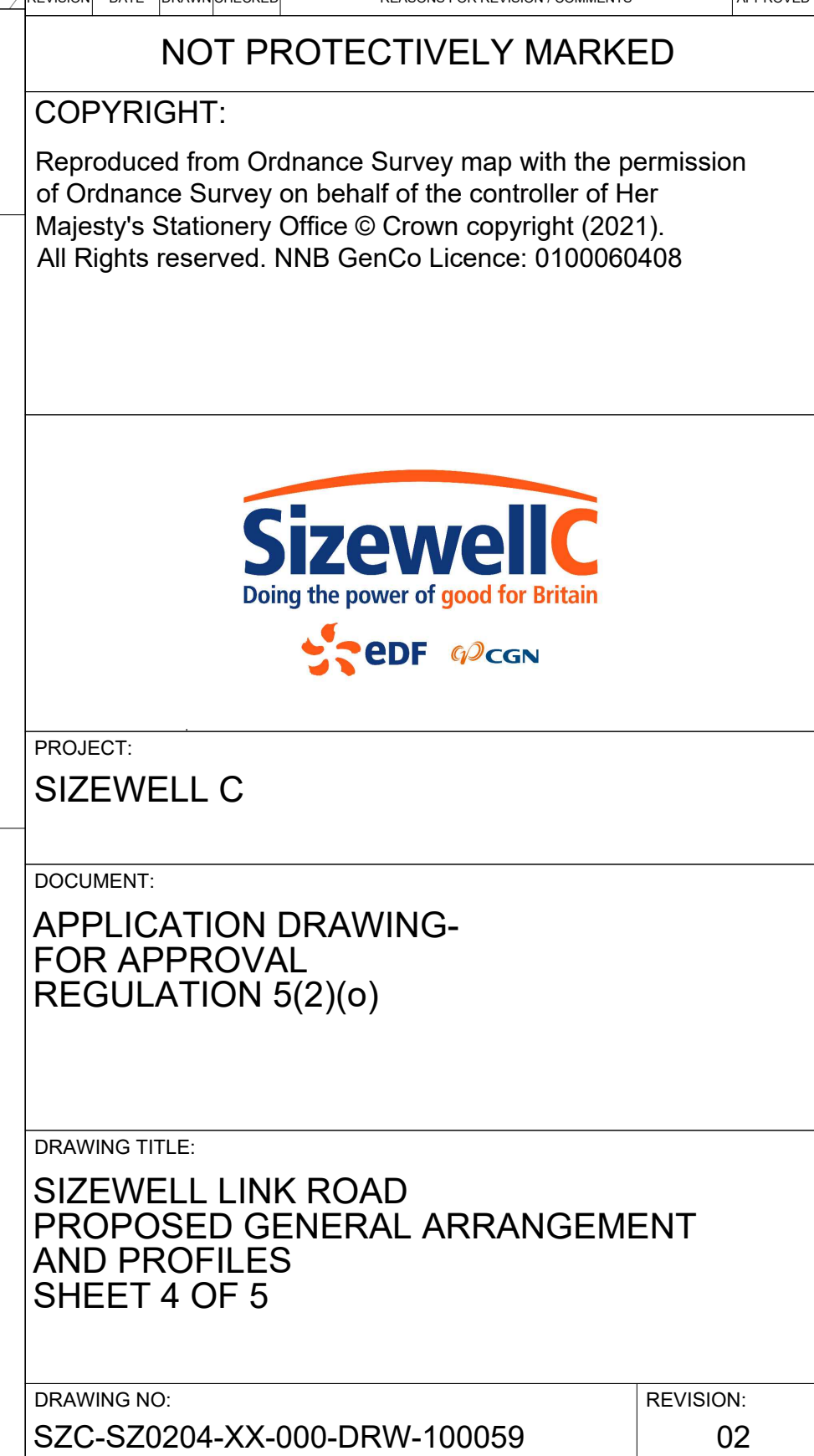
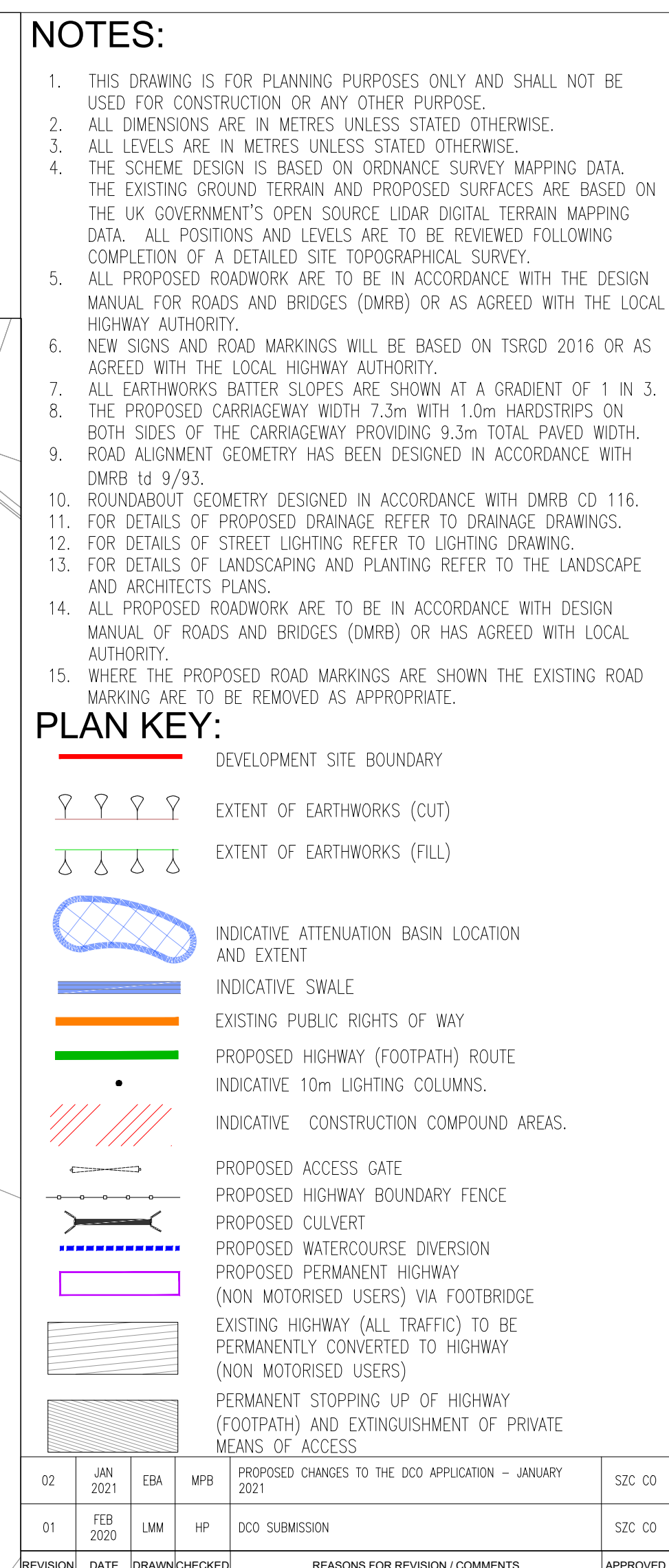
DRAWN: LMM

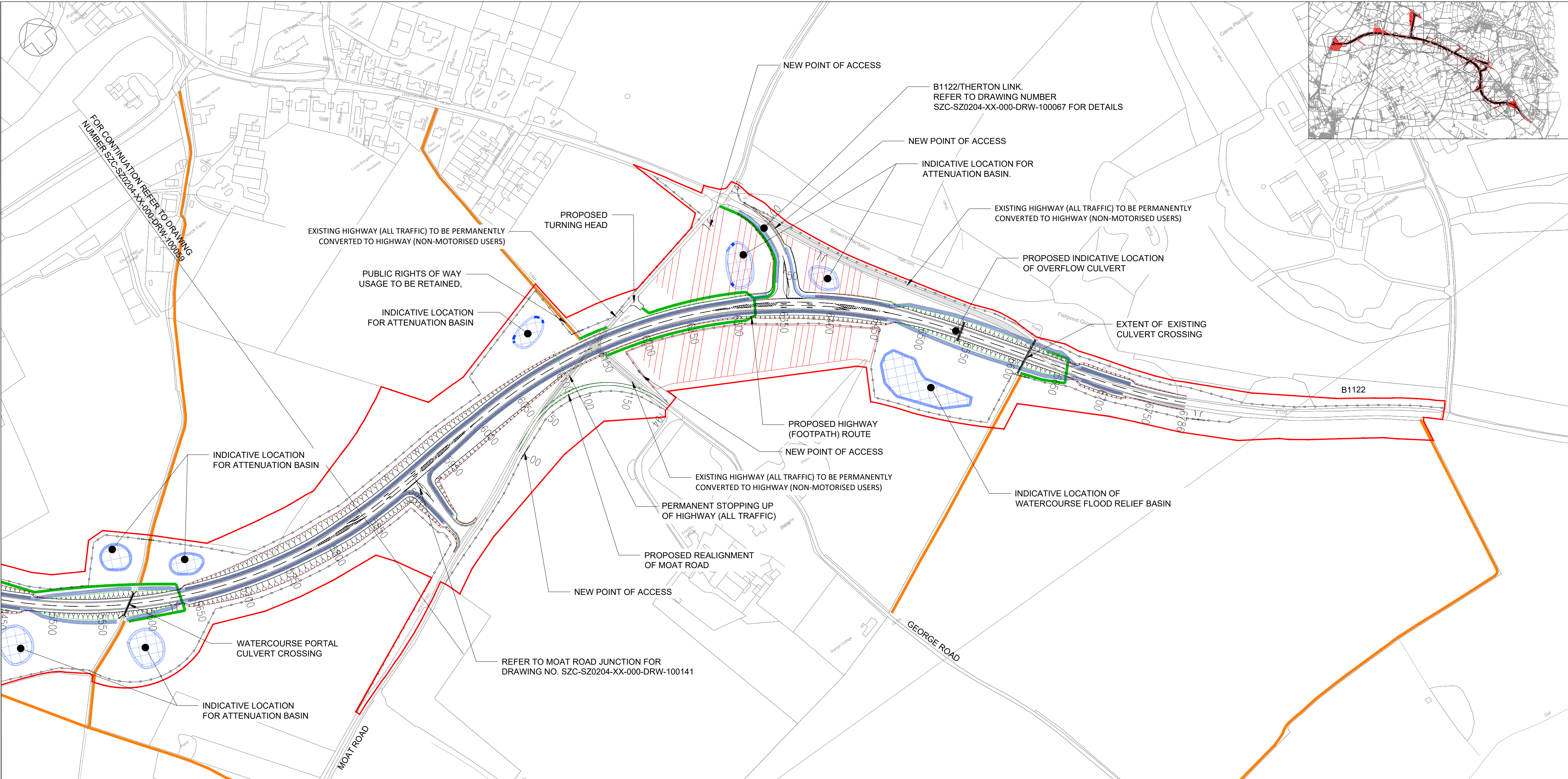
SCALE: 1:10000 @ A1

SCALE BAR:

0 1:10000 500 metres







- NOTES:**
- THIS DRAWING IS FOR PLANNING PURPOSES ONLY AND SHALL NOT BE USED FOR CONSTRUCTION OR ANY OTHER PURPOSE.
 - ALL DIMENSIONS ARE IN METRES UNLESS STATED OTHERWISE.
 - ALL LEVELS ARE IN METRES UNLESS STATED OTHERWISE.
 - THE SCHEME DESIGN IS BASED ON ORDNANCE SURVEY MAPPING DATA. THE EXISTING GROUND TERRAIN AND PROPOSED SURFACES ARE BASED ON THE UK GOVERNMENT'S OPEN SOURCE LIDAR DIGITAL TERRAIN MAPPING DATA. ALL POSITIONS AND LEVELS ARE TO BE REVIEWED FOLLOWING COMPLETION OF A DETAILED SITE TOPOGRAPHICAL SURVEY.
 - ALL PROPOSED ROADWORK ARE TO BE IN ACCORDANCE WITH THE DESIGN MANUAL FOR ROADS AND BRIDGES (DMRB) OR AS AGREED WITH THE LOCAL HIGHWAY AUTHORITY.
 - NEW SIGNS AND ROAD MARKINGS WILL BE BASED ON TSRGD 2016 OR AS AGREED WITH THE LOCAL HIGHWAY AUTHORITY.
 - ALL EARTHWORKS BATTER SLOPES ARE SHOWN AT A GRADIENT OF 1 IN 3.
 - THE PROPOSED CARRIAGEWAY WIDTH 7.3m WITH 1.0m HARDSTRIPS ON BOTH SIDES OF THE CARRIAGEWAY PROVIDING 9.3m TOTAL PAVED WIDTH.
 - ROAD ALIGNMENT GEOMETRY HAS BEEN DESIGNED IN ACCORDANCE WITH DMRB Ltd 9/93.
 - ROUNDABOUT GEOMETRY DESIGNED IN ACCORDANCE WITH DMRB CD 116.
 - FOR DETAILS OF PROPOSED DRAINAGE REFER TO DRAINAGE DRAWINGS.
 - FOR DETAILS OF STREET LIGHTING REFER TO LIGHTING DRAWING.
 - FOR DETAILS OF LANDSCAPING AND PLANTING REFER TO THE LANDSCAPE AND ARCHITECTS PLANS.
 - ALL PROPOSED ROADWORK ARE TO BE IN ACCORDANCE WITH DESIGN MANUAL OF ROADS AND BRIDGES (DMRB) OR HAS AGREED WITH LOCAL AUTHORITY.
 - WHERE THE PROPOSED ROAD MARKINGS ARE SHOWN THE EXISTING ROAD MARKING ARE TO BE REMOVED AS APPROPRIATE.

- PLAN KEY:**
- DEVELOPMENT SITE BOUNDARY
 - EXTENT OF EARTHWORKS (CUT)
 - EXTENT OF EARTHWORKS (FILL)
 - INDICATIVE ATTENUATION BASIN LOCATION AND EXTENT
 - INDICATIVE SWALE
 - EXISTING PUBLIC RIGHTS OF WAY
 - PROPOSED HIGHWAY (FOOTPATH) ROUTE
 - INDICATIVE 10m LIGHTING COLUMNS.
 - INDICATIVE CONSTRUCTION COMPOUND AREAS.
 - PROPOSED ACCESS GATE
 - PROPOSED HIGHWAY BOUNDARY FENCE
 - PROPOSED CULVERT
 - PROPOSED FLOOD RELIEF CULVERT CROSSING
 - PROPOSED WATERCOURSE DIVERSION
 - EXISTING HIGHWAY (ALL TRAFFIC) TO BE PERMANENTLY CONVERTED TO HIGHWAY (NON MOTORISED USERS)
 - PERMANENT STOPPING UP OF HIGHWAY (ALL TRAFFIC)

02	JAN 2021	EBA	MPB	PROPOSED CHANGES TO THE DCO APPLICATION - JANUARY 2021	SZC CO
01	FEB 2020	LMH	HP	DCO SUBMISSION	SZC CO
REVISION	DATE	DRAWN/CHECKED		REASONS FOR REVISION / COMMENTS	APPROVED

NOT PROTECTIVELY MARKED

COPYRIGHT:
Reproduced from Ordnance Survey map with the permission of Ordnance Survey on behalf of the controller of Her Majesty's Stationery Office © Crown copyright (2021). All Rights reserved. NNB GenCo Licence: 0100060408



PROJECT:
SIZEWELL C

DOCUMENT:
APPLICATION DRAWING-
FOR APPROVAL
REGULATION 5(2)(o)

DRAWING TITLE:
SIZEWELL LINK ROAD
PROPOSED GENERAL ARRANGEMENT
AND PROFILES
SHEET 5 OF 5

DRAWING NO:
SZC-SZ0204-XX-000-DRW-100060

REVISION:
02

DATE:
JAN 2021

DRAWN:
LMH

SCALE:
1:2500 @ A1

SCALE BAR:

0 1:2500 125 metres

- PROFILE KEY:**
- EXISTING GROUND PROFILE
 - PROPOSED FINISHED GROUND PROFILE

